

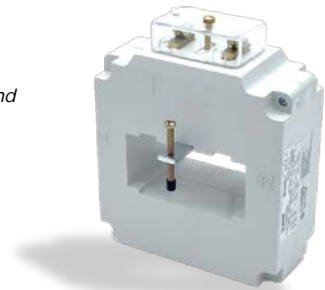
## TRASFORMATORI AMPEROMETRICI DI PROTEZIONE PROTECTION CURRENT TRANSFORMERS

# CTA 51P

### Descrizione / Description

Trasformatore amperometrico di protezione  
Primario a barra passante  
Connessione secondaria con viti M4 e  
faston 6,3x0,8  
Dimensioni ridotte  
Alte prestazioni  
Massima precisione

*Protection current transformer  
Busbar passing primary  
Secondary connection with M4 screws and  
6,3x0,8 faston  
Small size  
High performance  
Maximum precision*



### Dati tecnici / Technical data

Corrente primaria	<i>Primary current</i>	600-2500A (vedi tabella / see table)
Corrente secondaria	<i>Secondary current</i>	/ 5A ; / 1A
Frequenza di funzionamento	<i>Operating frequency</i>	40-60Hz
Classe di precisione	<i>Accuracy class</i>	5P3 - 5P20 (vedi tabella / see table)
Prestazioni	<i>Performance</i>	2,5-65VA (vedi tabella / see table)
Isolamento	<i>Isolation</i>	a secco in aria / dry in the air
Tensione max. riferimento per l'isolamento	<i>Max. Voltage reference for insulation</i>	1,2kV
Tensione di prova per l'isolamento	<i>Test voltage for insulation</i>	6 kV, t = 60 sec. @ 50 Hz
Classe d'isolamento	<i>Insulation class</i>	E (IEC 85 temp. max 120°C)
Sovraccorrente permanente	<i>Permanent overcurrent</i>	1,2 In
Fattore di sicurezza	<i>Safety factor</i>	N≤5
Corrente termica di corto circuito ( $I_{th}$ )	<i>Short circuit thermal current (<math>I_{th}</math>)</i>	60 In
Corrente dinamica di corto circuito ( $I_{dyn}$ )	<i>Dynamic short circuit current (<math>I_{dyn}</math>)</i>	2,5 Ith
Grado di protezione	<i>Degree of protection</i>	IP20
Materiale termoplastico autoestinguente	<i>Self extinguishing thermoplastic material</i>	UL94 - V0
Condizioni d'impiego; temperatura	<i>Terms of use; temperature</i>	-25+50 °C
Umidità relativa (R.H.)	<i>Relative humidity (R.H.)</i>	max. 85%
Condizioni di stoccaggio	<i>Storage conditions</i>	-40+80 °C
Norme di riferimento	<i>Reference standards</i>	IEC/EN 61869-1 ; IEC/EN 61869-2

### Tipo / Type

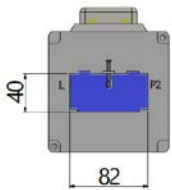
Tipo Type	Portata Range (A)	Cl. 5P3		Cl. 5P5		Cl. 5P10		Cl. 5P15		Cl. 5P20	
		(VA)	Codice Code	(VA)	Codice Code	(VA)	Codice Code	(VA)	Codice Code	(VA)	Codice Code
CTA 51	600/ 1	20	E24211-0600P0	15	E24211-0600P1	7	E24211-0600P2	4,5	E24211-0600P3	3	E24211-0600P4
	800/ 1	25	E24211-0800P0	20	E24211-0800P1	8	E24211-0800P2	4,5	E24211-0800P3	2,5	E24211-0800P4
	1000/ 1	25	E24211-1000P0	25	E24211-1000P1	10	E24211-1000P2	6	E24211-1000P3	3	E24211-1000P4
	1200/ 1	35	E24211-1200P0	30	E24211-1200P1	12	E24211-1200P2	6	E24211-1200P3	3	E24211-1200P4
	1500/ 1	50	E24211-1500P0	35	E24211-1500P1	12	E24211-1500P2	5	E24211-1500P3	-	E24211-1500P4
	1750/ 1	60	E24211-1750P0	35	E24211-1750P1	12	E24211-1750P2	5	E24211-1750P3	-	E24211-1750P4
	2000/ 1	65	E24211-2000P0	40	E24211-2000P1	12	E24211-2000P2	3	E24211-2000P3	-	E24211-2000P4
	2500/ 1	65	E24211-2500P0	45	E24211-2500P1	10	E24211-2500P2	-	E24211-2500P3	-	E24211-2500P4

## Tipo / Type

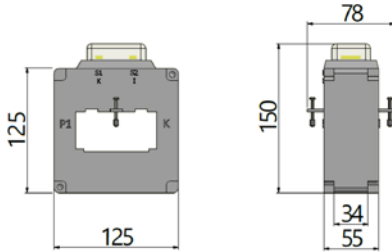
Tipo Type	Portata Range (A)	Cl. 5P3		Cl. 5P5		Cl. 5P10		Cl. 5P15		Cl. 5P20	
		(VA)	Codice Code	(VA)	Codice Code	(VA)	Codice Code	(VA)	Codice Code	(VA)	Codice Code
CTA 51	600/ 5	20	E24210-0600P0	15	E24210-0600P1	7	E24210-0600P2	4,5	E24210-0600P3	3	E24210-0600P4
	800/ 5	25	E24210-0800P0	20	E24210-0800P1	8	E24210-0800P2	4,5	E24210-0800P3	2,5	E24210-0800P4
	1000/ 5	25	E24210-1000P0	25	E24210-1000P1	10	E24210-1000P2	6	E24210-1000P3	3	E24210-1000P4
	1200/ 5	35	E24210-1200P0	30	E24210-1200P1	12	E24210-1200P2	6	E24210-1200P3	3	E24210-1200P4
	1500/ 5	50	E24210-1500P0	35	E24210-1500P1	12	E24210-1500P2	5	E24210-1500P3	-	E24210-1500P4
	1750/ 5	60	E24210-1750P0	35	E24210-1750P1	12	E24210-1750P2	5	E24210-1750P3	-	E24210-1750P4
	2000/ 5	65	E24210-2000P0	40	E24210-2000P1	12	E24210-2000P2	3	E24210-2000P3	-	E24210-2000P4
2500/ 5	65	E24210-2500P0	45	E24210-2500P1	10	E24210-2500P2	-	E24210-2500P3	-	E24210-2500P4	

## Dima di fissaggio / Fixing template

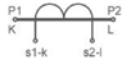
Montaggio diretto su sbarra / Direct mounting on busbar



## Dimensioni / Dimension



## Siglatura morsetti / Terminal marking



Primario / Primary : P1-K P2-L  
Secondario / Secondary : s1-K s2-L

Confezione / Package : 3 pz